



## PROGRAMMES AFTER 10+2 [ FEE & SCHOLARSHIP DETAILS ]

### DISCIPLINES

Engineering | Computer Applications | Management | Economics | Law | Hotel Management & Tourism | Biotechnology | Microbiology | Biochemistry | Environmental Sciences | Forensic Sciences | Agriculture | Food Technology | Nutrition and Dietetics | Botany | Zoology | Chemistry | Physics | Mathematics | Commerce | Architecture | Planning | Interior & Furniture Design | Product & Industrial Design | Fashion Design | Multimedia & Animation | Journalism & Film Production | Fine Arts | Performing Arts | Political Science | Geography | History | Psychology | Public Administration | Sociology | Library Science | Arts (Humanities) | English & Foreign Languages | Indian Languages | Education | Physical Education | Pharmaceutical Sciences | Ayurvedic Pharmaceutical Sciences | Medical Laboratory Sciences | Physiotherapy

# SCHOLARSHIP SCHEME

Lovely Professional University strongly believes that monetary constraints should not be an obstacle for a student to have access to quality education. So the university offers Scholarship (upto Rs. 5 Lac per student) in more than 200 programmes of the University, ranging from Diploma Programmes to Ph.D. The scheme is as under:

**1. Scholarship Categories:** Scholarships are awarded to candidates based on their performance on any of the following categories:

- **Eligibility Qualification** (for example 10+2 for Under Graduate Programmes)
- LPU's Entrance and Scholarship Test : **LPUNEST**
- Certain **National Level Entrance Tests** [JEE (Mains) NEET, UCEED, CAT, MAT, GATE, GPAT, etc.]

**2. Scholarship Brackets:** For each category mentioned above, three brackets of Scholarship (Bracket 1, 2 and 3) are defined. Each bracket represents specific criteria (for example scores in qualifying exam) which an applicant has to reach for him/her to fall in that particular bracket. The criteria in each bracket decreases as it proceeds and so does the scholarships. So, the students meeting the requirement of Bracket- 1 gets the highest Scholarship and those in Bracket - 2 or 3 gets relatively lesser scholarship.

**3. Scholarship Phases:** The amount of Scholarship

also depends on the Phase in which the candidate takes Admission in the University. Admissions in LPU are done in different Phases, which are bifurcations of the Admission time period. **Phase - I** starts as early as **January 2019** and continues till the end of **April 2019**. The subsequent phases (Phase-II, III, IV) are conducted only if the seats in the concerned Programme remain vacant. The amount of Scholarship reduces with each passing phase and no Scholarship is offered in Phase - IV (if conducted). The dates for Phase II, III and IV are as follows :

- Phase-II : 1st May to 31st May 2019
- Phase-III : 1st June to 30th June 2019
- Phase-IV : 1st July to 31st July 2019

Further details can be referred from University website ([www.lpu.in](http://www.lpu.in))

**4. Amount of Scholarship in different Phases and Brackets**

The Scholarship amount/ percentage varies as per the following table which depicts scholarship as percentage of programme fee :

Table 1

|             | Bracket-1 | Bracket-2 | Bracket-3 |
|-------------|-----------|-----------|-----------|
| Phase - I   | 50%       | 40%       | 30%       |
| Phase - II  | 40%       | 30%       | 20%       |
| Phase - III | 30%       | 20%       | 10%       |

To know the fee after scholarship for different programmes, refer the 'Fee Table' mentioned at the last page.

## 5. Details of Scholarship Brackets

Scholarship brackets for various categories as mentioned in point no. 1 and 2 is detailed below:

(i) **On the basis of Eligibility Qualification:**

- **Bracket 1** - Students scoring more than 95% marks in eligibility qualification falls in Bracket -1 and are thus eligible for Scholarship of 50% of Programme fee in Phase-I.
- **Bracket 2** - Students scoring between 90% to 94.99% marks in eligibility qualification falls in Bracket-2 and are thus eligible for Scholarship of 40% of Programme fee in Phase-I.
- **Bracket 3** - Students scoring between 80% to 89.99% marks in eligibility qualification falls in Bracket-3 and are

thus eligible for Scholarship of 30% of Programme fee in Phase-I.



- **For Lateral Entry Programmes**, in addition to Eligibility Qualification, Scholarship will be offered on the basis of qualification previous to Eligibility qualification. For example, someone seeking admission in B.Tech (Lateral Entry) can seek scholarship on the basis of Diploma (Eligibility Qualification) or 10th (Qualification previous to Diploma)
- (ii) **On the basis of LPUNEST:**
- For each Scholarship bracket, cut-offs are determined by the University and accordingly the Scholarships as mentioned in Table - 1 are offered. To know the tentative cut-off for various programmes and approximate number of students falling in different categories, refer university website [www.lpu.in](http://www.lpu.in)
- (iii) **On the basis of National Level Entrance Tests:**
- Performance in the following National Level Entrance Tests is considered for offering Scholarship in LPU:
    - JEE (Main), NEET, UCEED, CLAT, LSAT, NATA.
  - For every test mentioned above, LPU has determined the cut-offs for various Scholarship brackets. E.g., In case of JEE (Main) the cut-off for Scholarship Bracket-1 is 201 marks or above, for Bracket-2 it is 150.1 to 200 marks and

for Bracket-3 cut-off is 100 to 150 marks. So anyone scoring 160 marks will fall in Bracket-2 and get Scholarship of 40% in Phase-I. To know the cut-offs for other National Level Tests, please refer university website.

## 6. Other Scholarships offered by the University

Apart from the scholarship on the basis of LPUNEST-2019/ Qualifying Examination explained above, LPU also offers scholarship in the following areas to provide financial assistance to the excellent students to enable them to pursue professional education.

- Scholarship on the basis of Performance in Sports
- Scholarship on the basis of Performance in Cultural, R&D and Co-curricular activities
- Scholarship on the basis of Performance in Social Service and Bravery Awards
- Fee Concession for Defence, Central Armed Police Forces (CAPF) personnel and their dependents
- Special Scholarship scheme of full Programme Fee and Residential Fee waiver to top 20 students of every recognized board (State as well as Central)
- Scholarship for Orphan Applicants
- Scholarship for Persons with Certain Disability

For details regarding scholarship, please refer university website i.e. [www.lpu.in](http://www.lpu.in)

## B.Tech.

## B.Tech. (Hons.)

## Integrated B.Tech. - M.Tech.

## Integrated B.Tech. - MBA

## Dual Degree B.Tech. - M.Tech.

## Dual Degree B.Tech. - MBA

## STREAMS/ MAJORS OFFERED IN ENGINEERING

LPU is offering not only conventional Engineering streams/ majors but also one of its kind trend setting streams/ majors transforming Engineering education to leap into the next leg of technology upbeat.

Examine the streams/majors given below to determine which Engineering concentration appeal to you:

- Electronics and Communications Engineering (ECE)
- Computer Science and Engineering (CSE)
- Information Technology (IT)
- Mechanical Engineering (ME)
- ME - Mechatronics
- Automobile Engineering (AE)
- Aerospace Engineering
- Civil Engineering (CE)
- Electrical Engineering (EE)
- Electrical and Electronics Engineering (EEE)
- Biotechnology (BT)
- Food Technology
- Biomedical Engineering
- Chemical Engineering (CHE)
- Petroleum Engineering

# SPECIALIZATIONS/ TRACKS \* FOR ENGINEERING PROGRAMME

Engineering systems and products have become fabulously complex creating the want of specialized professionals. LPU has gauged the future in close association with the industry and has crafted specializations within the streams. An Engineering graduate upon learning the basics progresses into deeper learnings of one of the specialization of a discipline to be ready to handle futuristic devices and processes. Some of such Engineering Minors are :

## Electronics and Communication Engg. (ECE)

- ECE with specialization in Internet of Things
- ECE with specialization in Embedded System
- ECE with specialization in VLSI Design
- ECE with specialization in Energy Systems

## Computer Science and Engineering (CSE)

- CSE with specialization in Machine Learning
- CSE with specialization in Data Science
- CSE with specialization in Big Data
- CSE with specialization in Cyber Security
- CSE with specialization in Full Stack Web Developer
- CSE with specialization in Android Application Development
- CSE with specialization in Cloud Computing

## Mechanical Engineering (ME)

- ME with specialization in Robotics and Mechatronics

- ME with specialization in Computer Aided Engineering

## Civil Engineering (CE)

- Energy, Environment & Society
- Industrial Waste Management
- Water and Air Testing Laboratory.
- Sustainable Project Management.

## Electrical Engineering (EE)

- Instrumentation Technologies
- Power Electronics and Drives
- Robotics and Automations

## Biotechnology (BT)

- Pharmaceutical Biotechnology
- Food Biotechnology
- Biochemical and Bioprocess Technology

## Biomedical Engineering (BE)

- Advanced Biomedical Engineering
- Biomedical Engineering in Hospitals

\* also known as Engineering Minors  
For more details regarding specializations, refer website [www.lpu.in](http://www.lpu.in)

# OPEN MINORS FOR ENGINEERING PROGRAMMES

We firmly believe that our students are citizen of the world and will contribute to the society and entire mankind. Open minors play pivotal role in this readiness as an Engineering graduate can take up courses in Management, Fashion Design, Journalism, Agriculture etc. so as to acquire multi-dimensional proficiency and to be able to pave bright new vision to be incorporated in crafting the sustainable societal solutions. Students are given an option to choose from a plethora of open minors such as :

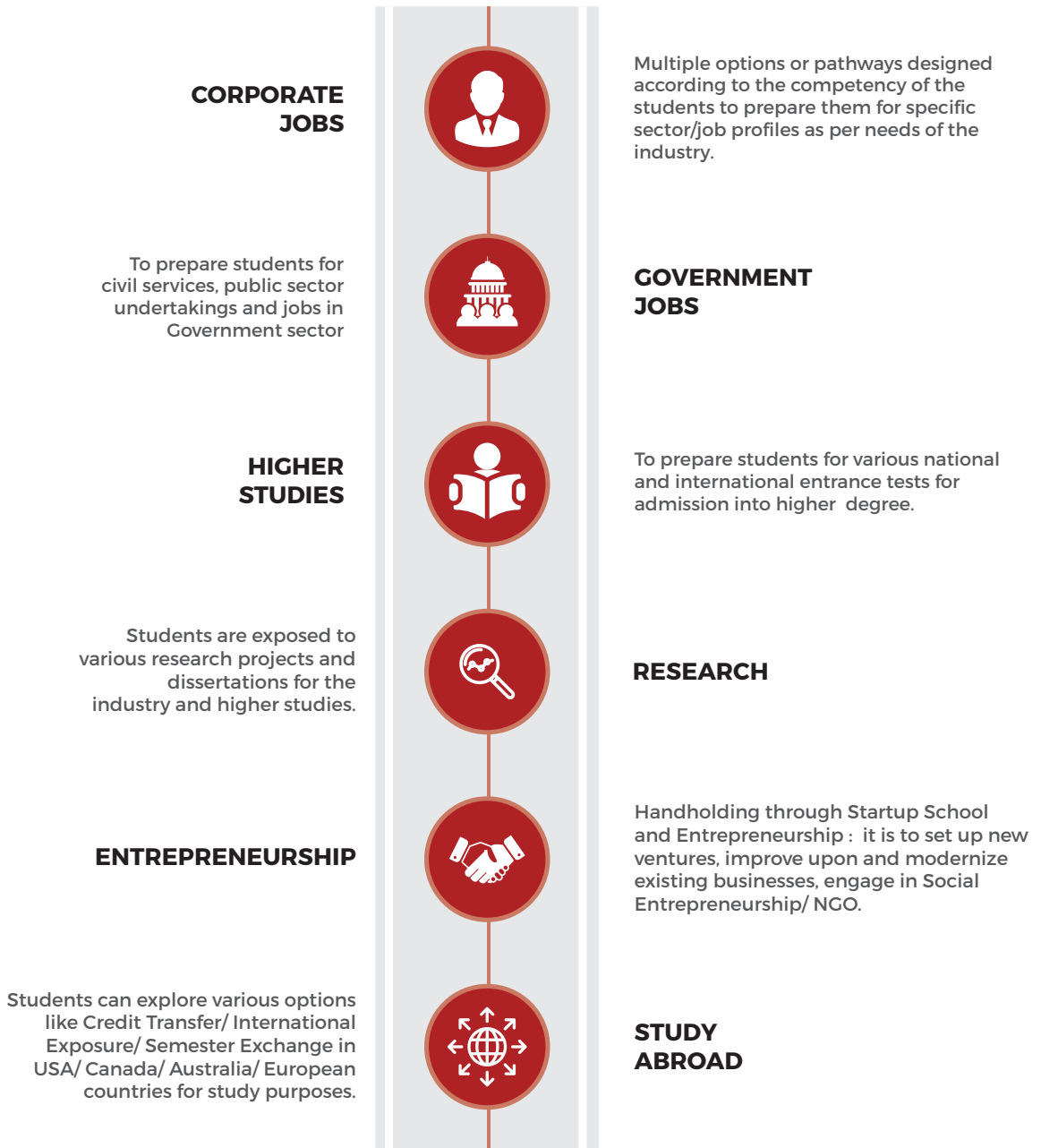
- |                                    |  |                           |
|------------------------------------|--|---------------------------|
| • 2D Animation                     | • Applications of Psychology               | • Management Fundamentals |
| • Accounting Fundamentals          | • Fundamentals of Finance                  | • Marketing Management    |
| • Airlines Hospitality             | • Geography                                | • Operations Management   |
| • Applied Geography                | • Hindi                                    | • Optics in Daily Life    |
| • Business Economics               | • History                                  | • Physics of Materials    |
| • Chemistry of Soap and Detergents | • Human Resource Management                | • Political Science       |
| • Contemporary Electoral Systems   | • International Business                   | • Practical Psychology    |
| • Digital Marketing                | • International Politics                   | • Public Administration   |
| • English                          | • Introducing Sociology and Indian Society | • Punjabi                 |
| • Foundation and                   |  | • Tourism Business Basics |
|                                    |  | • Water Chemistry         |

A student based on his zest, picks up the minor and fulfils the excitement of learning beyond books which is purely on student to have it or not.

Note: Minors as mentioned may be offered subject to minimum number of students and feasibility. For details, refer university website ([www.lpu.in](http://www.lpu.in)).

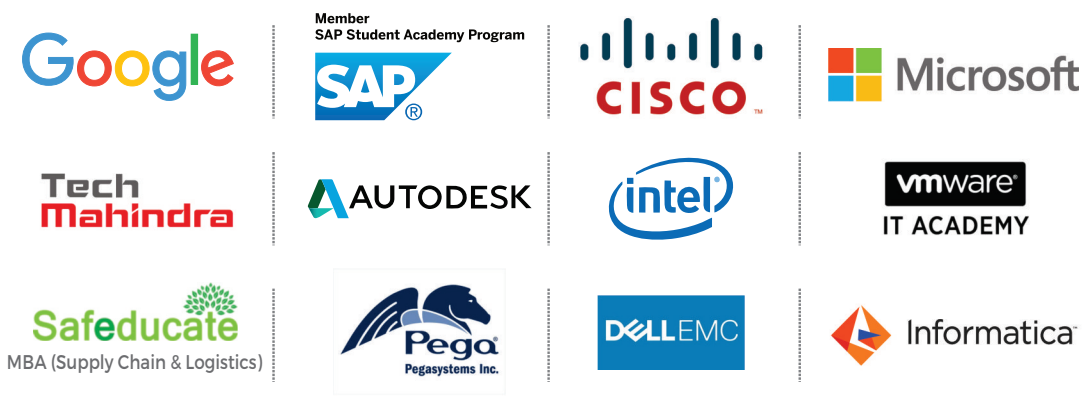
# PLACEMENT PATHWAYS

As each individual is unique and approaches life in a different manner, so we allow each of them to choose his/her own placement pathway based on individual interest to prepare for life :



# INDUSTRIAL TIE-UPS

For hands-on practical training and certifications in collaboration with world's top brands.



# Fee Table [Program

The following table lists the fee after different Scholarship percentages (50%, 40%, 30% etc.) and these percentages vary with Phases of Admissions. To know the details of Phases and Scholarship bracket applicable, please refer Scholarship Scheme as detailed on initial pages of this brochure.

| After 10+2 Programmes  | Programme Fee# (per sem.) | Applicable fee after 50% scholarship (per sem.) in ₹ | Applicable fee after 40% scholarship (per sem.) in ₹ | Applicable fee after 30% scholarship (per sem.) in ₹ | Applicable fee after 20% scholarship (per sem.) in ₹ | Applicable fee after 10% scholarship (per sem.) in ₹ |
|--|---------------------------|--|--|--|--|--|
| <b>ENGINEERING</b>   |                           |  |  |  |  |  |
| B.Tech., Dual Degree B.Tech. - M.Tech., Dual Degree B.Tech. - MBA  | 90000                     | 45000  | 54000  | 63000  | 72000  | 81000  |
| B.Tech. (Hons.), Integrated B.Tech. - M.Tech., Integrated B.Tech. - MBA  | 100000                    | 50000  | 60000  | 70000  | 80000  | 90000  |
| <b>COMPUTER APPLICATIONS/ BOTANY/ ZOOLOGY/ CHEMISTRY/ PHYSICS/ MATHEMATICS</b>                                       |                           |  |  |  |  |  |
| BCA, Dual Degree BCA-MCA, B.Sc. (Information Technology), B.Sc. (Computer Science)                                   | 60000                     | 30000  | 36000  | 42000  | 48000  | 54000  |
| BCA (Hons.), Dual Degree BCA (Hons.)-MCA (Hons.)   | 70000                     | 35000  | 42000  | 49000  | 56000  | 63000  |
| B.Sc. (Hons.) Botany, B.Sc. (Hons.) Zoology  | 50000                     | 25000  | 30000  | 35000  | 40000  | 45000  |
| B.Sc. (Hons.) Chemistry, B.Sc. (Hons.) Physics   | 50000                     | 25000  | 30000  | 35000  | 40000  | 45000  |
| B.Sc. (Hons.) Mathematics  | 50000                     | 25000  | 30000  | 35000  | 40000  | 45000  |
| <b>BIOTECHNOLOGY/ MICROBIOLOGY/ FORENSIC SCIENCES/ AGRICULTURE</b>   |                           |  |  |  |  |  |
| B.Sc. (Hons.) Biotechnology  | 60000                     | 30000  | 36000  | 42000  | 48000  | 54000  |
| B.Sc. (Hons.) Microbiology, B.Sc. (Forensic Sciences)  | 60000                     | 30000  | 36000  | 42000  | 48000  | 54000  |
| B.Sc. (Hons.) Agriculture  | 80000                     | 40000  | 48000  | 56000  | 64000  | 72000  |
| <b>FOOD TECHNOLOGY/ NUTRITION &amp; DIETETICS/ PHYSIOTHERAPY/ AYURVEDIC PHARMACEUTICAL SCI.</b>                      |                           |  |  |  |  |  |
| B.Sc. (Hons.) Food Technology, B.Sc. (Nutrition & Dietetics)   | 60000                     | 30000  | 36000  | 42000  | 48000  | 54000  |
| Bachelor of Physiotherapy (BPT)  | 70000                     | 35000  | 42000  | 49000  | 56000  | 63000  |
| B.Pharm. (Ayurveda)  | 50000                     | 25000  | 30000  | 35000  | 40000  | 45000  |
| <b>MANAGEMENT/ COMMERCE/ ECONOMICS</b>   |                           |  |  |  |  |  |
| BBA, Dual Degree BBA-MBA, BBA (IT), BBA (Oil and Gas Management)   | 60000                     | 30000  | 36000  | 42000  | 48000  | 54000  |
| Integrated BBA-MBA, BBA (Hons.), Dual Degree BBA (Hons.) - MBA, BBA (Financial Markets), BBA (International Finance) | 70000                     | 35000  | 42000  | 49000  | 56000  | 63000  |
| B.Com.   | 50000                     | 25000  | 30000  | 35000  | 40000  | 45000  |
| Integrated B.Com. - MBA  | 60000                     | 30000  | 36000  | 42000  | 48000  | 54000  |
| B.Com. (Hons.), Dual Degree B.Com. (Hons.) - MBA   | 60000                     | 30000  | 36000  | 42000  | 48000  | 54000  |
| B.Com. (Management Accounting and International Finance)   | 70000                     | 35000  | 42000  | 49000  | 56000  | 63000  |
| B.Sc. (Hons.) Economics  | 50000                     | 25000  | 30000  | 35000  | 40000  | 45000  |

# mes after 12th (10+2)]

| After 10+2 Programmes   | Programme Fee# (per sem.) | Applicable fee after 50% scholarship (per sem.) in ₹ | Applicable fee after 40% scholarship (per sem.) in ₹ | Applicable fee after 30% scholarship (per sem.) in ₹ | Applicable fee after 20% scholarship (per sem.) in ₹ | Applicable fee after 10% scholarship (per sem.) in ₹ |
|---|---------------------------|--|--|--|--|--|
| <b>LAW</b>  |                           |  |  |  |  |  |
| B.A., LL.B (Hons.); B.Com., LL.B. (Hons.); BBA, LL.B. (Hons.)   | 80000                     | 40000  | 48000  | 56000  | 64000  | 72000  |
| <b>HOTEL MANAGEMENT &amp; TOURISM</b>   |                           |  |  |  |  |  |
| Bachelor of Hotel Mgt. & Catering Technology (BHMCT), B.Sc. (Hotel Management)  | 70000                     | 35000  | 42000  | 49000  | 56000  | 63000  |
| B.Sc. (Airlines, Tourism & Hospitality), Diploma in Airline Cabin Crew and Hospitality  | 70000                     | 35000  | 42000  | 49000  | 56000  | 63000  |
| BBA (Tourism & Hospitality)   | 60000                     | 30000  | 36000  | 42000  | 48000  | 54000  |
| <b>ARCHITECTURE</b>   |                           |  |  |  |  |  |
| B.Arch.   | 90000                     | 45000  | 54000  | 63000  | 72000  | 81000  |
| <b>PLANNING</b>   |                           |  |  |  |  |  |
| B.Plan.   | 70000                     | 35000  | 42000  | 49000  | 56000  | 63000  |
| <b>INTERIOR &amp; FURNITURE DESIGN/ PRODUCT &amp; INDUSTRIAL DESIGN/ FASHION DESIGN</b>   |                           |  |  |  |  |  |
| B.Sc. (Design - Interior & Furniture), B.Design (Interior & Furniture), B.Design (Product & Industrial), B.Sc. (Design - Fashion), B.Design (Fashion)   | 80000                     | 40000  | 48000  | 56000  | 64000  | 72000  |
| <b>MULTIMEDIA &amp; ANIMATION/ JOURNALISM &amp; FILM PRODUCTION</b>   |                           |  |  |  |  |  |
| B.Sc. (Design - Multimedia), B.Design (Multimedia), B.Sc. (Design - Graphics), B.Design (Graphics), B.Sc. (Design - Gaming), B.Design (Gaming), B.Sc. (Film & TV Production), B.Design (Film & TV Production) | 80000                     | 40000  | 48000  | 56000  | 64000  | 72000  |
| B.A. (Journalism & Mass Communication)  | 70000                     | 35000  | 42000  | 49000  | 56000  | 63000  |
| <b>FINE ARTS/ PERFORMING ARTS</b>   |                           |  |  |  |  |  |
| Bachelor of Fine Arts (BFA), B.A. (Fine Arts), B.A. (Music Vocal/ Music Tabla/ Theatre), BPA (Music Vocal/ Music Tabla/ Theatre)  | 40000                     | 20000  | 24000  | 28000  | 32000  | 36000  |
| <b>ARTS (HUMANITIES)</b>  |                           |  |  |  |  |  |
| Bachelor of Arts (B.A.)   | 35000                     | 17500  | 21000  | 24500  | 28000  | 31500  |
| B.A. (Hons.)  | 45000                     | 22500  | 27000  | 31500  | 36000  | 40500  |
| <b>LIBRARY SCIENCES/ EDUCATION</b>  |                           |  |  |  |  |  |
| Diploma in Library & Information Sciences, Integrated B.A. - B.Ed., Integrated B.Sc. - B.Ed.  | 35000                     | 17500  | 21000  | 24500  | 28000  | 31500  |
| <b>PHYSICAL EDUCATION</b>   |                           |  |  |  |  |  |
| B.Sc. (Health and Physical Education), Bachelor of Physical Education & Sports (BPES)   | 35000                     | 17500  | 21000  | 24500  | 28000  | 31500  |
| <b>PHARMACEUTICAL SCIENCES</b>  |                           |  |  |  |  |  |
| B.Pharm.  | 90000                     | 45000  | 54000  | 63000  | 72000  | 81000  |
| <b>MEDICAL LABORATORY SCIENCES</b>  |                           |  |  |  |  |  |
| B.Sc. (Medical Lab. Technology)   | 70000                     | 35000  | 42000  | 49000  | 56000  | 63000  |

# Examination Fee - Rs. 2500 per semester  
E&OE

Everything mentioned above is subject to conditions & changes from time to time

# Location Map



Use this Quick Response (QR) code to find out more on your smart phone. You just need to download any free QR code reader onto your phone and scan the QR code.



Jalandhar-Delhi G.T.Road, Phagwara,  
Punjab (India) 144411  
**For General Enquiry:** Ph.: 01824-404455  
SMS LPU to 53030  
**Email:** admissions@lpu.co.in **Website:** www.lpu.in

Follow us on Social Media platforms

